



STUDY in BRNO

STUDY in the HEART of EUROPE

Basic overview, city, country,
and study programmes

AHOJ! = HELLO!

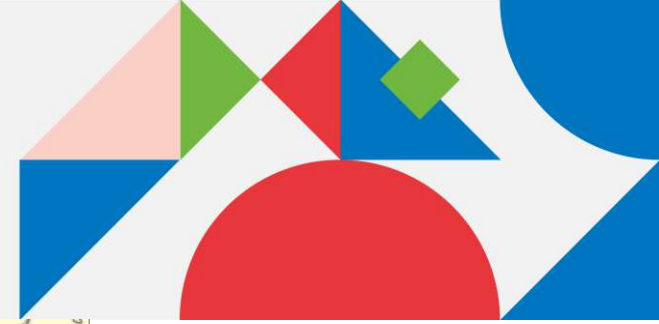
Mendel
University
in Brno

MASARYK
UNIVERSITY

T
BRNO
UNIVERSITY
OF TECHNOLOGY

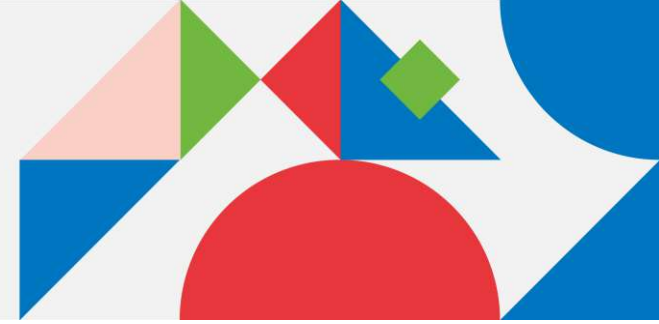


Where is Brno?

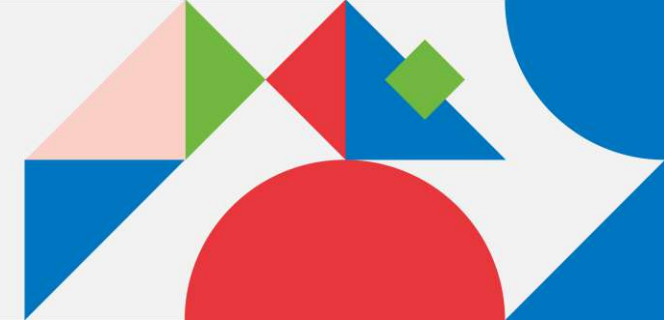


STUDY in BRNO

The City of Brno



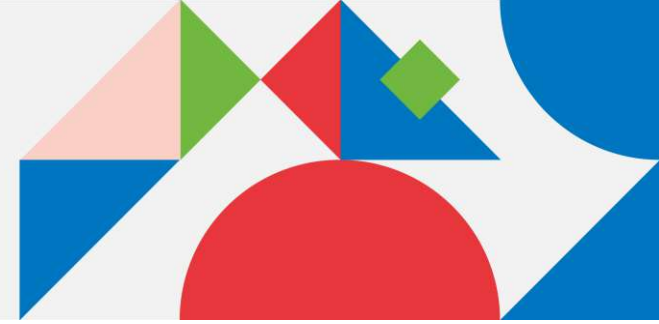
- 6th most popular student city according to the QS student index in 2019
- 350,000 inhabitants, approx. 60,000 students
- Famous for its coffee culture, electron microscopes, functionalist architecture, music and theatre, video games industry and much more
- Ideal point for exploring Europe – it is right in the centre
- The universities are strongly tied to the city – gain contacts and experience during your studies



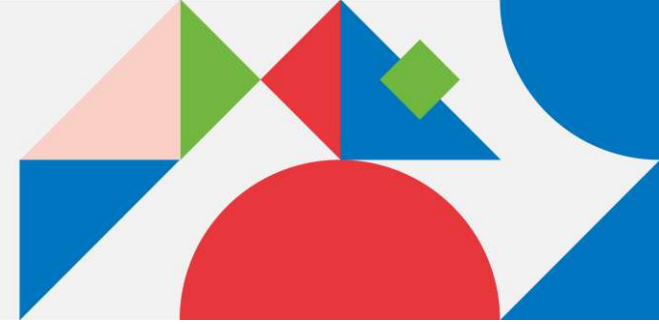
STUDY in the HEART of EUROPE



The Czech Republic



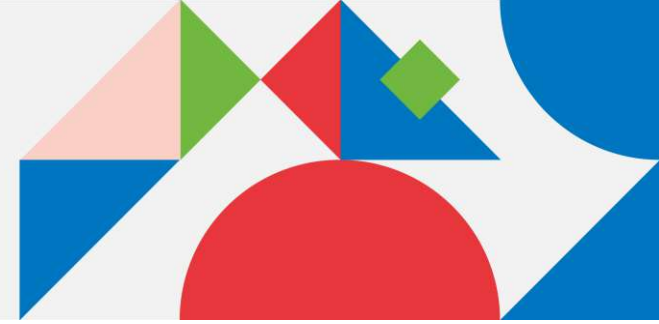
- 10,5 million inhabitants
- Located in Central Europe, rich history and culture since the middle ages
- Very friendly cost of living
- 9th safest country in the world according to the Global Peace Index 2019
- Cradle of genetics, contact lenses, water turbine, blood types, nanofibers and many more (including sugar cubes and lager beer).



STUDY in the HEART of EUROPE

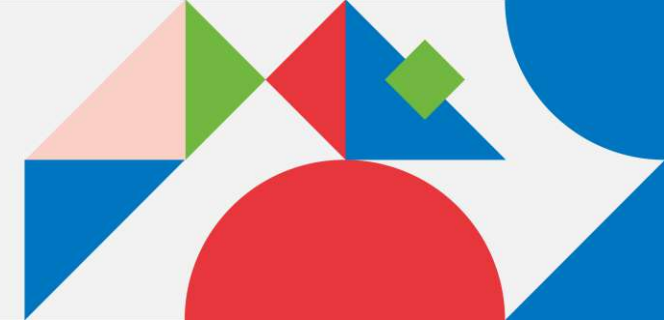
STUDY in BRNO

Why to study in Brno



- City of students
- Prestigious education and state-of-the-art facilities for affordable prices
- Very friendly cost of living
- Avoid the “You must have the experience to get experience” paradox
- Gain international experience

Universities



Brno University of Technology
www.vutbr.cz/en



Mendel University
www.mendelu.cz/en



Masaryk University
www.muni.cz/en

Study-in-brno.cz



Study programmes

Choose a programme you want to study in Brno! You can filter the programmes according to their field, the university or the level of study. Find out what has the Heart of Europe prepared for you!

Level of Courses ▾

Economics ▾

University ▾

Only currently open programs ⓘ

FIND PROGRAMS

Total programmes found: 13

International Business and Management

Programme focus aims to educate experts highly qualified to manage companies on an international scale.



Faculty of Business and Management

| | |
|------------------------------|-------------------------------------|
| Level of study | Master's |
| Duration | 2 years |
| Mode ⓘ | Full time study |
| Start date | September 2021 |
| Application deadline | Closed |
| Tuition fees (academic year) | 1,950 € for EU / 2,950 € for non-EU |

[MORE INFORMATION](#) →

Finance

Get to know the inner workings of the financial market, corporate finance and monetary systems. See the big picture an...



Faculty of Economics and Administration

| | |
|------------------------------|-----------------|
| Level of study | Master's |
| Duration | 2 years |
| Mode ⓘ | Full time study |
| Start date | February |
| Application deadline | 2020/10/15 |
| Tuition fees (academic year) | 3,500 € |

[MORE INFORMATION](#) →

Economics and Management

Graduates have knowledge of economic theory, management and marketing, finance, accounting and tax., quantitative...



Faculty of Business and Economics

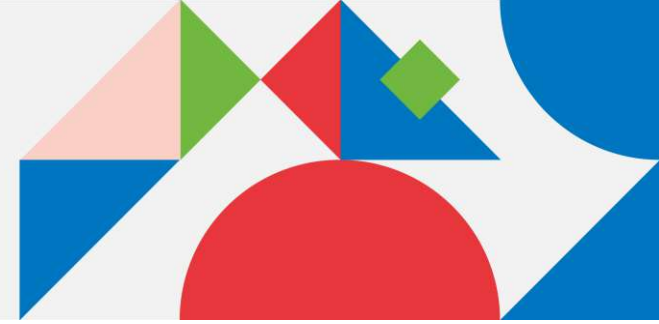
| | |
|------------------------------|-----------------|
| Level of study | Bachelor's |
| Duration | 3 years |
| Mode ⓘ | Full time study |
| Start date | September 2021 |
| Application deadline | 2021/08/31 |
| Tuition fees (academic year) | 2,550 EUR |

[MORE INFORMATION](#) →

STUDY in the HEART of EUROPE

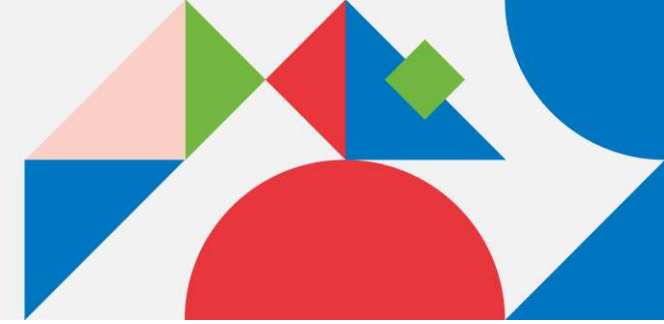
STUDY in BRNO

Brno University of Technology



- Over hundred-year tradition, established in 1899
- 8 Faculties, 3 university Institutes, 7 Research and Development Centres
- More than 25 Bachelor's, Master's and Ph.D. programmes in English
- International Student Club, member of Erasmus Student Network – buddy programme and Welcome Week for international students
- Excellent sport facilities (stadium of Olympic standard) with wide range of sport activities on offer

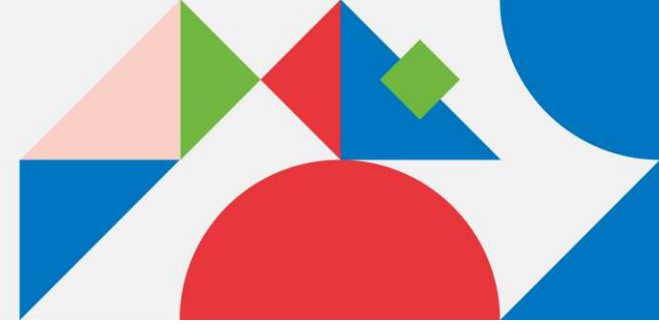
Brno University of Technology



STUDY in the HEART of EUROPE

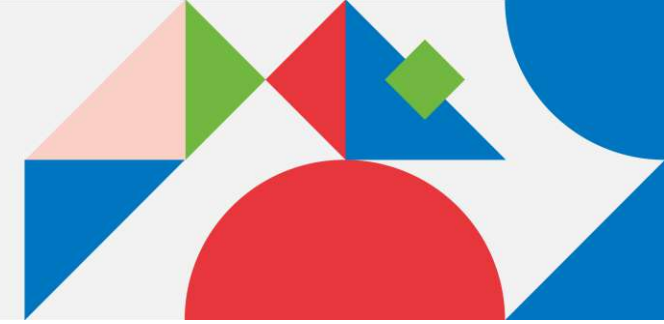
STUDY in BRNO

Mendel University



- The oldest independent specialized university in the Czech Republic
- Established in 1919
- Friendly and safe university campus with a botanical garden located in the centre of the city
- Amazing variety of events both in and outside classes
- One of the Czech leading educational institutions in the sphere of life sciences and agricultural sciences

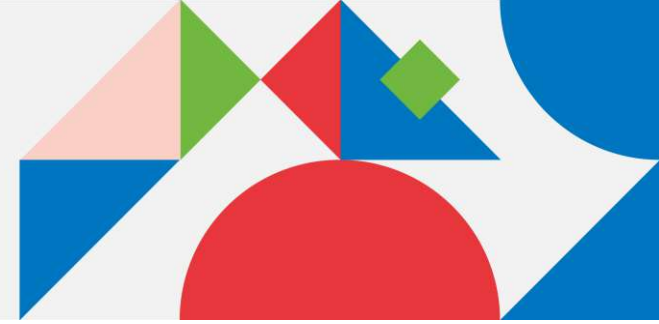
Mendel University



STUDY in the HEART of EUROPE

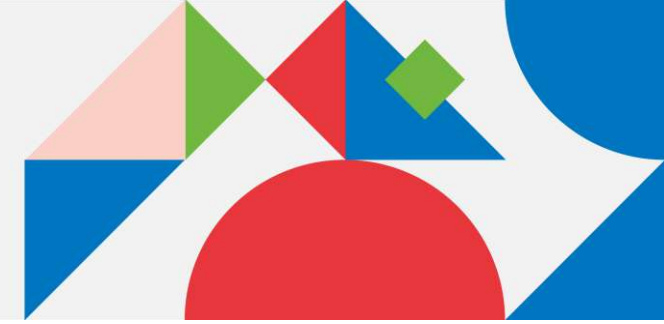


Masaryk University



- Founded in 1919
- International environment – 22 % of students are international, 139 nationalities in 2019
- Personal approach to students – more and more selective approach
- Around 500 disabled students – a special university department Teiresias
- Strong emphasis on research – CEITEC centre, MA students participating in research, cooperation with corporate partners

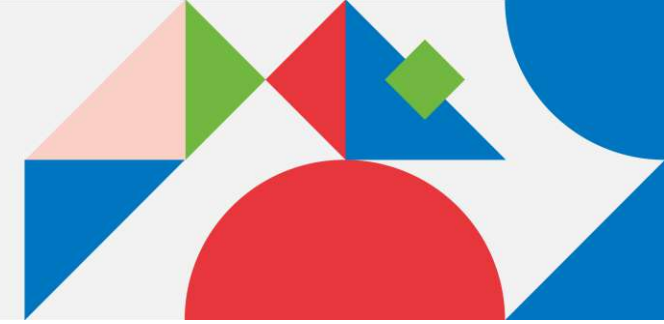
Masaryk University



STUDY in the HEART of EUROPE

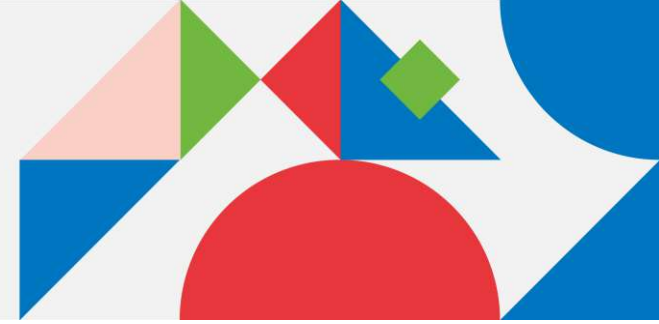
 STUDY in BRNO

Study fields



- Medicine and Pharmacy 7,750–13,600 EUR
- Advanced Materials 2,000–3,000 EUR
- Technical Sciences 1,500–4,000 EUR
- Life Sciences 2,000–3,100 EUR
- Social Sciences, Arts and Humanities 2,000–3,000 EUR
- Law 2,200 EUR
- Information technology 2,500–4,000 EUR
- Sport Sciences 4,000 EUR
- Bioinformatics and Biocomputing 2,550 EUR
- Economics 1,950–9,000 EUR
- Education 2,000 EUR
- Agrisciences 3,100 EUR
- Forestry and Wood Technology 3,070 EUR
- Architecture 3,500 EUR

Affordability



- Scholarships to partially cover the costs available at some programmes
- Possibility to work while on student visa
- Guaranteed affordable accommodation for degree students (if desired)
- Low cost of living in Brno makes up for the costs
 - €70–140 – Shared university housing (monthly)
 - €10 – Public transportation pass (monthly)
 - €100 – Groceries (monthly)
 - €1,5 – a loaf of bread
 - €6 – Eating out

Contact us!

Do you have any questions?

www.study-in-brno.cz

Instagram: @studyinbrno

Facebook: @studyinbrnoofficial

E-mail: info@study-in-brno.cz

NA SHLEDANOU = GOOD BYE

STUDY in the HEART of EUROPE

STUDY in BRNO

