



UNIVERSITÉ
CATHOLIQUE
DE LILLE 1875

Learn
In
Lille
Live
Europe **lille**



European Summer Program
26 May - 23 June 2021 // 25 June - 24 July 2021

Contents

- 3** WELCOME !
- 4** UNIVERSITÉ CATHOLIQUE DE LILLE
- 6** LILLE PROGRAMS
- 8** LILLE EUROPEAN SUMMER PROGRAM
- 9** CELEBRATING 20 YEARS OF ESP IN 2020
- 10** COURSE CATALOGUE
- 12** PROGRAM PACKAGE
- 14** FIELDTRIPS
- 16** LILLE, A CITY OF ART, CULTURE, & HISTORY
- 18** JOIN US IN LILLE !



WELCOME !

Bonjour & bienvenue ...

...to France's leading private university, the Université Catholique de Lille, and to LILLE!

Home to the Université Catholique de Lille since 1875, Lille is a vibrant and dynamic university city at the centre of Western Europe. With swift connections to Brussels (35 minutes), Paris (60 minutes), and London (80 minutes), Lille is perfect for students planning to visit and study Europe. And there is always much to see and do in Lille itself – a welcoming multicultural haven.

We are proud of our growing network of over 530 partner universities, and are happy to welcome students from all over the world, all year round, as part of our efforts to promote peace, education, and cultural awareness.

This year marks the 20th edition of the LILLE European Summer Program. This achievement is made possible by the continued support of our partners both internationally and here at the Université Catholique de Lille. We are hoping you will celebrate with us in Lille this coming summer.

Seize a life changing opportunity to join an excellent, integrated and convivial academic program offering a full cultural experience – come to LILLE: “Learn In Lille, Live Europe”!

À très bientôt! See you soon!

Pierre Giorgini,
President Rector,
Université Catholique
de Lille



Anne-Marie Michel
Director
International Relations
and Communication





UNIVERSITÉ CATHOLIQUE DE LILLE



UNIVERSITÉ CATHOLIQUE DE LILLE 1875

Founded in 1875, and now one of the major higher education institutions in France, the *Université Catholique de Lille* is strongly committed to the development of the region, and to laying the groundwork for the Third Industrial Revolution, through active collaboration both with local authorities and with the business sector. Its teaching departments and research teams combine **multidisciplinary expertise and innovative new teaching methods** aimed at enhancing the educational experience through cooperative learning and more.



33,000
students



300
student
associations



5,500
international students
on our campuses



2nd
most beautiful
campus in France



15
minutes walk from
campus to Lille's
historic city centre



8
hospitals and
health care
institutions



The *Université Catholique de Lille* is France's largest private, not-for-profit university, with over 33,000 students and 5,000 staff members.

As a comprehensive university, the *Université Catholique de Lille* is home to **5 faculties, 20 schools** (including two triple-crown awarded business schools and industry leading engineering schools), multiple institutes, and a renowned hospital group, and offers **more than 200 distinct degrees** in several centers of excellence, including:

- Law, Economics, Business, & Management
- Innovation and Design Thinking
- Science and Technologies
- Health and Social Care
- Arts, Humanities, Theology, Ethics, & Education





"It was the best experience in my life. You meet new people, you make friends, you learn about cultures, you try new experiences, new foods, you learn French and you get to know yourself. All these while you are in Europe, travelling. Don't miss this opportunity, you won't regret it!"

Consuelo - Argentina



LILLE PROGRAMS



LILLE – “Learn In Lille, Live Europe” – combines a variety of innovative, student-centred academic programs at the *Université Catholique de Lille*, tailored to suit different academic needs and schedules, and to provide a welcoming environment and an excellent study/life balance.

LILLE Winter (customizable) - 08 January to 27 January 2021

LILLE Spring (customizable) - dates coming soon

LILLE European Summer Program - 26 May to 23 June 2021

25 June to 24 July 2021

What does LILLE mean for you ?

- A wide array of intercultural and interactive course offerings
- Programs ranging from 2 to 4 weeks
- Courses taught in English or French
- Small international classes
- Cultural and curriculum-related fieldtrips
- Full package program (academic, accommodation, extra-curricular, 24/7 support)
- Experienced and dedicated international faculty and staff

Think outside the box – study outside the classroom!

Most LILLE courses involve visits to emblematic and pertinent local and regional sites.



Flash to discover the experience «Learn in Lille, Live Europe» in video !





LILLE EUROPEAN SUMMER PROGRAM



CELEBRATING ESP IN 20 years of 20

The LILLE European Summer Program (ESP) is composed of **two month-long program sessions** (June and July). Students are welcome to attend both sessions!

Students can choose from a large variety of electives. The programs offer academic courses **taught in English or in French**, utilizing the University's expertise in Humanities, Social Sciences, Management, and more.

Courses are taught by highly-qualified faculty from the *Université Catholique de Lille* or visiting professors, with an aim to **provide both theoretical background and practical learning through site visits and hands-on activities**.


The ESP offers a wide range of courses in the following areas:

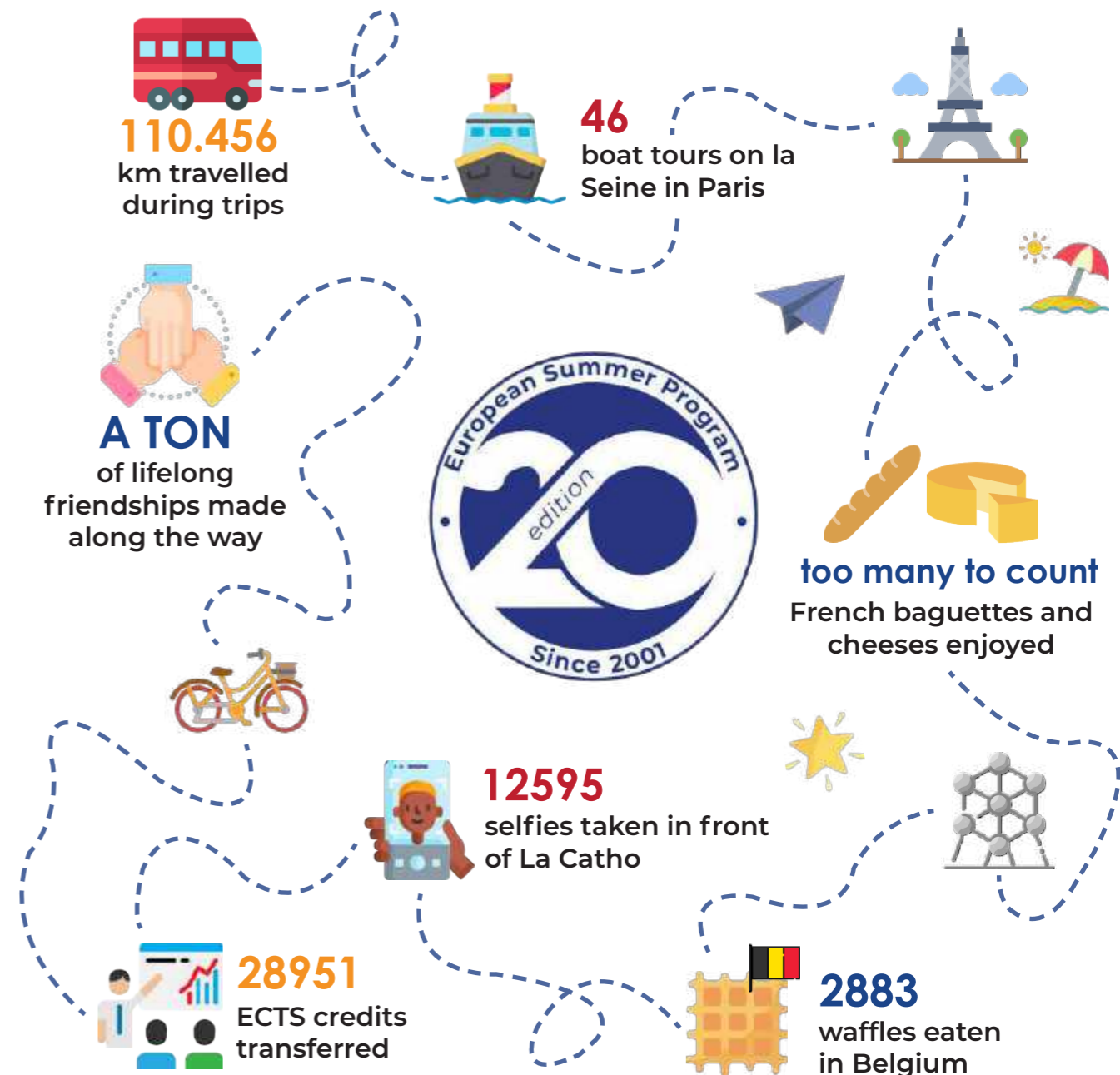
Liberal Arts, Business & Communication, Political Science & Law, Sustainability & the Sciences, Health

90 Contact hours* = **12** ECTS Credits = **6** North American Credits
*1 contact hour = 60 minutes
All courses fulfill ECTS (European Credit Transfer System) standards and detailed transcripts are available for credit transfer to your own degree program.


2,500
students welcomed since 2001


130
supporting universities


96%
recommend the program

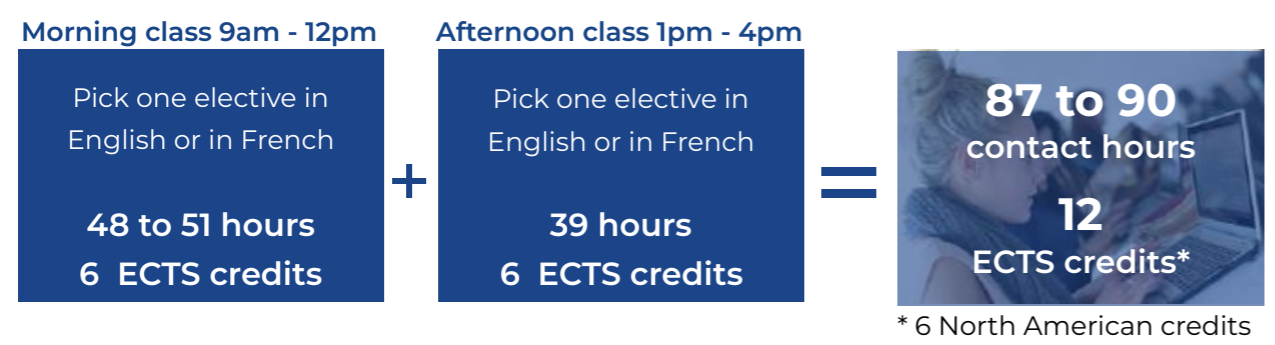




COURSE CATALOGUE

Students can customize their program by choosing from a large variety of courses representing the multidisciplinary of our University. For detailed information about the courses, **make sure to check the syllabi on our website.**

Create your own program !



Morning Electives (6 credits)

Includes a 9-hour module of Intercultural Communication in French or in English.

	Contact hours	Language	Availability	
			ESP1	ESP2
French Language and Culture*	51	French	✓	✓
Project Management for Everyone	48	English	✓	✓

*An initial placement activity will sort students from beginner to advanced.

Afternoon Electives (39 hours & 6 credits)

Liberal Arts	Availability	ESP1	ESP2
Understanding Contemporary France		✓	✓
World Class Museums		✓	✓
Introduction to French & Francophone Women Writers		✓	✗
Introduction to French Cinema		✓	✗
Introduction to Art and Cinema ^{New!}		✗	✓
Techniques of Traditional Cartoon and Digital Animation		✗	✓

Business & Communication	Availability	ESP1	ESP2
Corporate Social Responsibility and Sustainable Development		✓	✓
Corporate Culture, Human Resources and Innovation		✓	✓
International Teamwork and Communication		✓	✓
Politics in a Digital Era ^{New!}		✓	✗
International Marketing		✗	✓

Political Science & Law	Availability	ESP1	ESP2
European Union Policy Making		✓	✓
Politics in a Digital Era ^{New!}		✓	✗
Introduction to European Studies: History, Politics & Society		✗	✓

Sustainability and the Sciences	Availability	ESP1	ESP2
A Sustainable City ^{New!}		✓	✓
Corporate Social Responsibility and Sustainable Development		✓	✓
Fashion, Textiles, and Sustainable Futures ^{New!}		✓	✗
Introduction to Renewable Energies: Focus on Solar Energy		✓	✗
Cybersecurity Fundamentals ^{New!}		✗	✓
Current Practices in Renewable Energy		✗	✓

Health	Availability	ESP1	ESP2
Healthcare Systems: a Comparative Approach ^{New!}		✓	✗
Health: a Common Good ?		✗	✓

Taught in French	Availability	ESP1	ESP2
Communication française (minimum A2+)		✓	✓
La France et son cinéma (minimum B2+)		✓	✗



PROGRAM PACKAGE

HOSPITALITY

- Accommodation in individual rooms in secure and private student residences, which are easily accessible to campus by walking or public transit
- Meal pass for use at the university restaurant during opening hours (50€ on card, can be recharged online at the student's expense). Plenty of fast food and restaurant options near campus as well (4-8€)
- 5 group dinners throughout the program
- Access to university facilities
- Public transportation pass for all public transit systems in the Lille Metropolitan area



ORIENTATION

- Pick-up at train station on arrival day, campus tour, welcome brunch, ice-breaking activity, detailed program information session
- Student support available 24/7



PROGRAM PACKAGE

ACADEMIC

- Tuition fees & materials
- Morning & afternoon electives
- 12 ECTS credits (6 North American credits)

PROGRAM FEES

2,995€

10% discount for partner universities and for students attending both sessions



CULTURE & FIELDTRIPS

- Guided visit of Lille
- Day trips to historic and important Belgian cities with guided visits
- Cultural activities
- Movie nights
- Group dinners

APPLICATION DEADLINES

ESPI (25 May - 23 June) >> Deadline : 1 April 2020
ESP2 (25 June - 24 July) >> Deadline : 1 May 2020

(see website for further details)





INCLUDED FIELDTRIPS



OPTIONAL FIELDTRIPS



LILLE

Discover the “City of Art and History” and France’s 4th largest city.

To combine class teaching and practical experience, various fieldtrips are included in the cost of the European Summer Program. Their aim is to give the students an opportunity to visit places in the Euro-region with historical or cultural significance and relevance to courses offered.



BRUGES

Stroll in the streets and enjoy a cruise on a canal boat in the «Venice of Belgium».



BRUSSELS

Spend a day in the Capital of Belgium and Capital of the European Union.


We want students to make the most of their time in Lille, and have designed a series of additional fieldtrips and extra-curricular activities that will take them to some of the most emblematic cultural and historic places in France and Europe. Planned dates are available on the ESP website and may be subject to change. **Spots are limited !**

Weekends



PARIS
+200€

Transportation, 1 night in a hotel in a central location, breakfast, boat cruise on the Seine, access to public transportation



NORMANDY
+250€

Mont-Saint-Michel, D-Day beaches, transportation, 1 night in a hotel, breakfast and dinner



AMSTERDAM
+250€

Transportation, 1 night in a hostel with breakfast, 1 lunch, boat cruise, access to public transportation (Only ESP2)

Daytrips



WORLD WAR 1 SITES
+75€

Trenches, battlefields, and memorials on the Western Front, transportation, dinner and museums admission fees



AMIENS
+50€

Amiens and its medieval Cathedral, transportation and guided tour



NAUSICÀA
+75€

Visit the largest aquarium in Europe ! Transportation, lunch and admission fees

LILLE

a city of Art, Culture, and History

BIG CITY ADVANTAGE

SMALL CITY ATMOSPHERE

A city of History

Founded in 1066 by the Count of Flanders, Lille—*Rijsel* in Flemish—became an important trading and stock market point on the route between the rich Flemish towns and the Champagne fairs. As evident from some of its architecture, **Lille was successively Flemish, Burgundian, and Spanish** before finally becoming French in 1667 under Louis XIV, whose military engineer, Vauban, built Lille's impressive Citadel.

A city of Art

Four world-renowned museums in the region, among the **largest in France** (Musée des Beaux-Arts, Modern Art Museum, La Piscine de Roubaix, Louvre-Lens).

Most museums are free or have reduced rates for students.



A city of Culture

Lille also boasts a **significant number of theatres, music halls, movie theatres, an opera house, and a national orchestra**, while the metropolis is home to a large number of cultural events, including the Lille Piano(s) Festival, the International Independent Movie Week, the International Series Festival, a contemporary dance festival and the "Fête de la Musique" on June 21st with free concerts all over town.



The **2nd** largest French university center, **43%** of its inhabitants are under the age of 30



100 events in Lille every evening, thousands of restaurants and bars in the city

More dynamic than ever



At the crossroads of Europe

Lille's strategic location and the area's rich resources have made it **one of the most fought over regions in Europe**, a history visible today particularly through the numerous memorials from the last two World Wars in the region, toured by national and international visitors each year.

Lille enjoys all of the conveniences of being at the centre of a **2 million inhabitant urban zone**, yet **remains a "human-sized" university city** with 250,000 inhabitants. Visitors can get around easily on foot or by bicycle. Public transport also offers the metro, the tramway, and many bus lines running frequently and late into the night.



JOIN US IN LILLE !

The *Université Catholique de Lille* looks forward to welcoming you to France, to Lille, and to our university campus.



Important registration information

ESP1 (26 May - 23 June) >> Deadline : 1 April 2021

ESP2 (25 June - 24 July) >> Deadline : 1 May 2021

Applications open: January 2021

Cost of the program

2,995€ including

1,400€

Tuition fees:
tuition fees and course materials

1,295€

Hospitality package:
accommodation in student dorms, meal pass for use in the cafeteria with a 50-euro credit, an orientation program, monthly transportation pass for use on buses and metros in Lille, access to university facilities, fieldtrips to Bruges and Brussels, 5 group dinners, cultural and social activities

300€

Administration fees:
Non-refundable after registration

10% discount
for partner universities and for students attending both sessions

The ESP can also provide Health and Travel Insurance coverage, which is mandatory to study in France. Students under 25 can subscribe through the *Université Catholique de Lille* (+ 75 €).





60 boulevard Vauban
CS 40109 - 59016 Lille Cedex - France
Tel. +33 (0)3 59 30 25 39

lilleprograms@univ-catholille.fr

www.univ-catholille.fr/en/lille-esp



UNIVERSITÉ
CATHOLIQUE
DE LILLE 1875

